

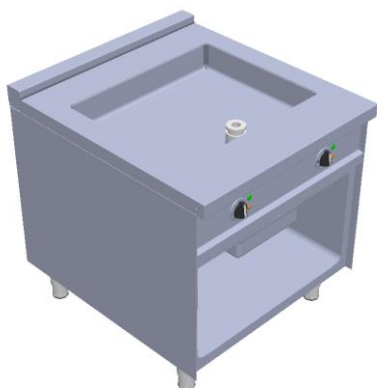


Total Food-Service Solutions

## Modular Cooking –Grandis 900

### Electric Griddle Pan

#### NEGP 8-90 GR



\*Due to routine technical improvement, the photograph shown may not represent the latest design of the products.

#### AVAILABLE MODEL

1. NEGP 8-90 GR

#### DESCRIPTION

Electric Griddle Pan with 9.1 kW power rate. Griddle temperature maintained by thermostat with maximum working temperature of 300°C.

Unit to be installed on open cabinet or similar elements, cantilever, or solid block solutions. Featuring removable clip joint to connect Grandis family product.

ITEM# : \_\_\_\_\_

MODEL# : \_\_\_\_\_

NAME : \_\_\_\_\_

SN : \_\_\_\_\_

#### MAIN FEATURE

- Double zones griddle pan with Steady State Surface (SSS) heating system.
- Plancha fry top for multipurpose cooking and easier transfer between cooking appliances.
- Uniform heating with 20 mm thick SS420.
- H2 Cabinet Finishing.
- Option of smooth, half grooved, full grooved or mirror finished griddle.

#### CONSTRUCTION

- All exterior panels in 304 type of Stainless Steel
- Orbital top panel anti-scratch finishing.
- Top with 2.0 mm thick surface.
- Side with 0.8 mm thick surface.
- Adjustable  $\pm 25$  mm Stainless Steel leg.

#### INCLUDED ACCESSORIES

- Food Pan GN 1/1 x 100 mm.

#### OPTIONAL ACCESSORIES

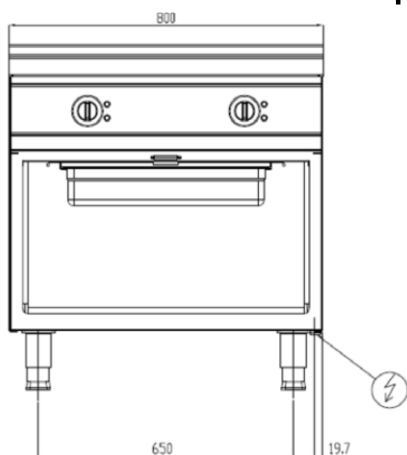
- Scrapper
- Clip Plate for Joining.

: \_\_\_\_\_

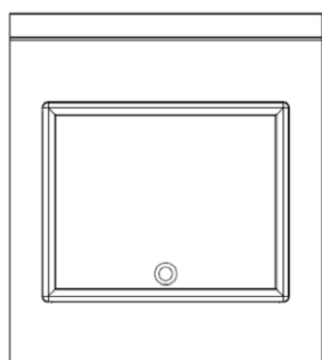
The company reserves the right to make modifications to the products without prior notice.  
All information correct at time of printing.  
2018.05.21



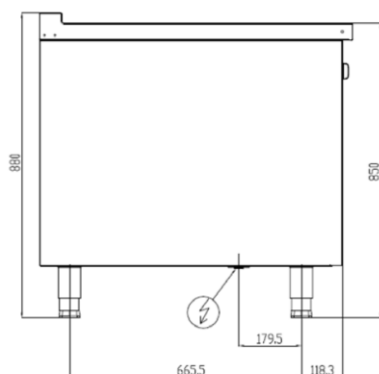
## FRONT



## TOP



## SIDE



Electric Connection

\* Overall Dimension in mm

## ELECTRIC

Electrical rating (kW)	:	9.1 kW
Element rating (kW)	:	9.1 kW
Electrical supply voltage	:	400V 3N
Required electrical supply (amps):		18
Electrical current split (amps) :		L1: 18
		L2: 12
		L3: 12

## KEY INFORMATION

Cooking surface width	:	630 mm
Cooking surface depth	:	510 mm
Direct heat emission	:	2.67 kW
Latent heat emission	:	3.24 kW
Steam emission	:	4.76 kg / h
Min. working temperature	:	50°C
Max. working temperature	:	300°C
Net weight	:	129 kg
Shipping height	:	1020 mm
Shipping width	:	855 mm
Shipping depth	:	995 mm
Shipping volume	:	0.868 m <sup>3</sup>

\*Missing information may be updated from time to time, please contact our representative to receive the updated data sheets.

: \_\_\_\_\_

The company reserves the right to make modifications to the products without prior notice.  
All information correct at time of printing.  
2018.05.21